

T 7000

TEXTILE BATCH CONTROLLER

T 7000 D

TEXTILE BATCH CONTROLLER with Touchscreen



- Fully automated, reliable and economical dyeing of textiles
- Configurable to all kinds of dyeing machines and processes
- Easy adaptability
- State of the art Eliar software powered by the most robust operating system: LINUX
- X86-based processor
- Allows remote assistance and technical support over internet with the help of powerful network connectivity
- Fast and reliable data acquisition and control via ELIAR PLCs or ELIAR smart I/O devices

Easy usage and monitoring

- Color graphical user interface and the interactive machine monitoring
- Touchscreen option (T 7000 D)
- User changeable information on the screen
- Machine diagram
- Real-time temperature and level graphics, comparison with the theoretical values
- Real-time "tours - tour time" chart
- Alarm management and alerts
- Manual intervention capability
- Connecting to T 7000 as remote desktop
- Working as a Field Data Acquisition Unit
- Open device configuration with password protection

Dyeing, drying and rinsing process functions

- Fabric dyeing, drying, rinsing, package dyeing, drying, rinsing functions
- More than 80 built in process functions for textile
- Easy adding of new functions based on machine and process properties

Optimization and accelerator features

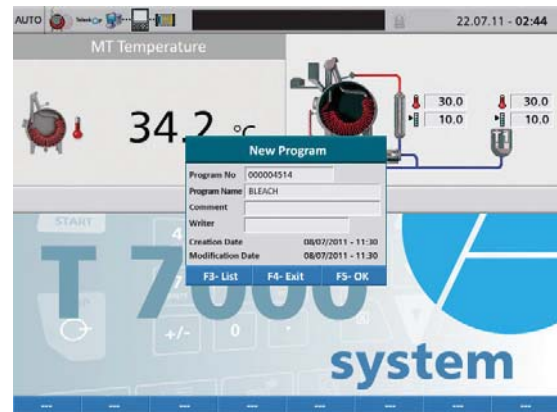
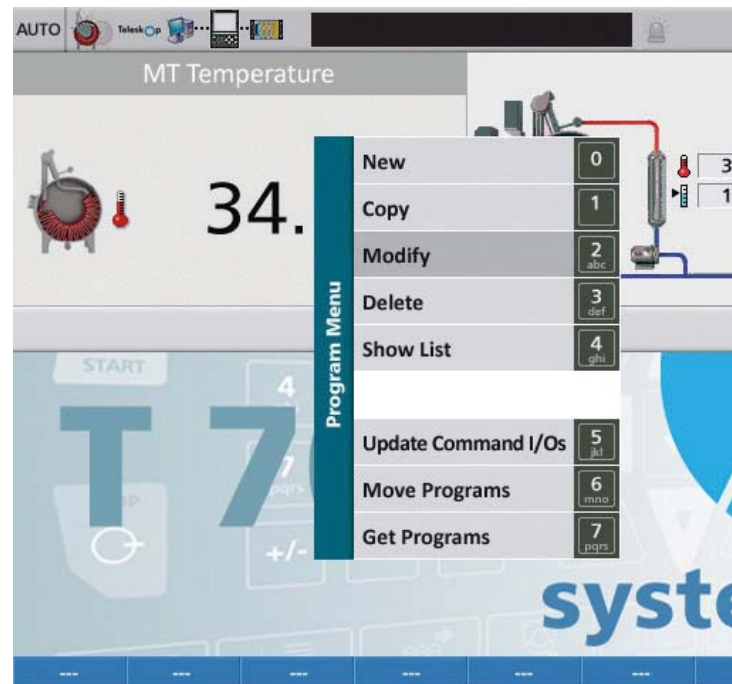
- Flexible process programs with the help of formulas as command parameters
- Automatic calculation of command parameters by "batch start parameters"
- 16 parallel commands execution in a single step
- Definition of machine constants and timer constants, faster machine installation
- Coupling of 4 machines
- Automatic fabric speed calculation and cycle time calculation, cycle count based process
- Starting of prepared processes which are previously planned and uploaded to the controller

Archiving, backup and maintenance

- Archiving of last 3 months of alarms, temperature, level and cycle time values
- Water consumption reports
- Electric consumption reports (using EPAC)
- USB flash disk usage and backup feature of configuration and processes
- Internet access and software version upgrade

User management

- Multi user support" Access rights management
- Password protected log in and log out



Multi language

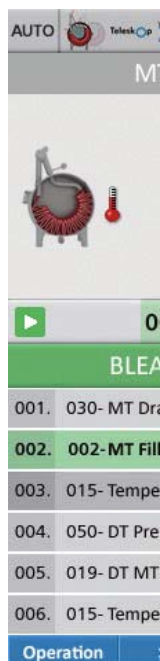
- Turkish, English, Chinese, Arabic, Persian, Portuguese, Russian and all other languages
- Runtime language switching

Teleskop® Central Supervisory and Control software

- 100 Mbit Ethernet connection
- Starting ready to run processes which are uploaded from Teleskop
- Fully automatic handling of online chemical and dyestuff requests to automatic dispensers

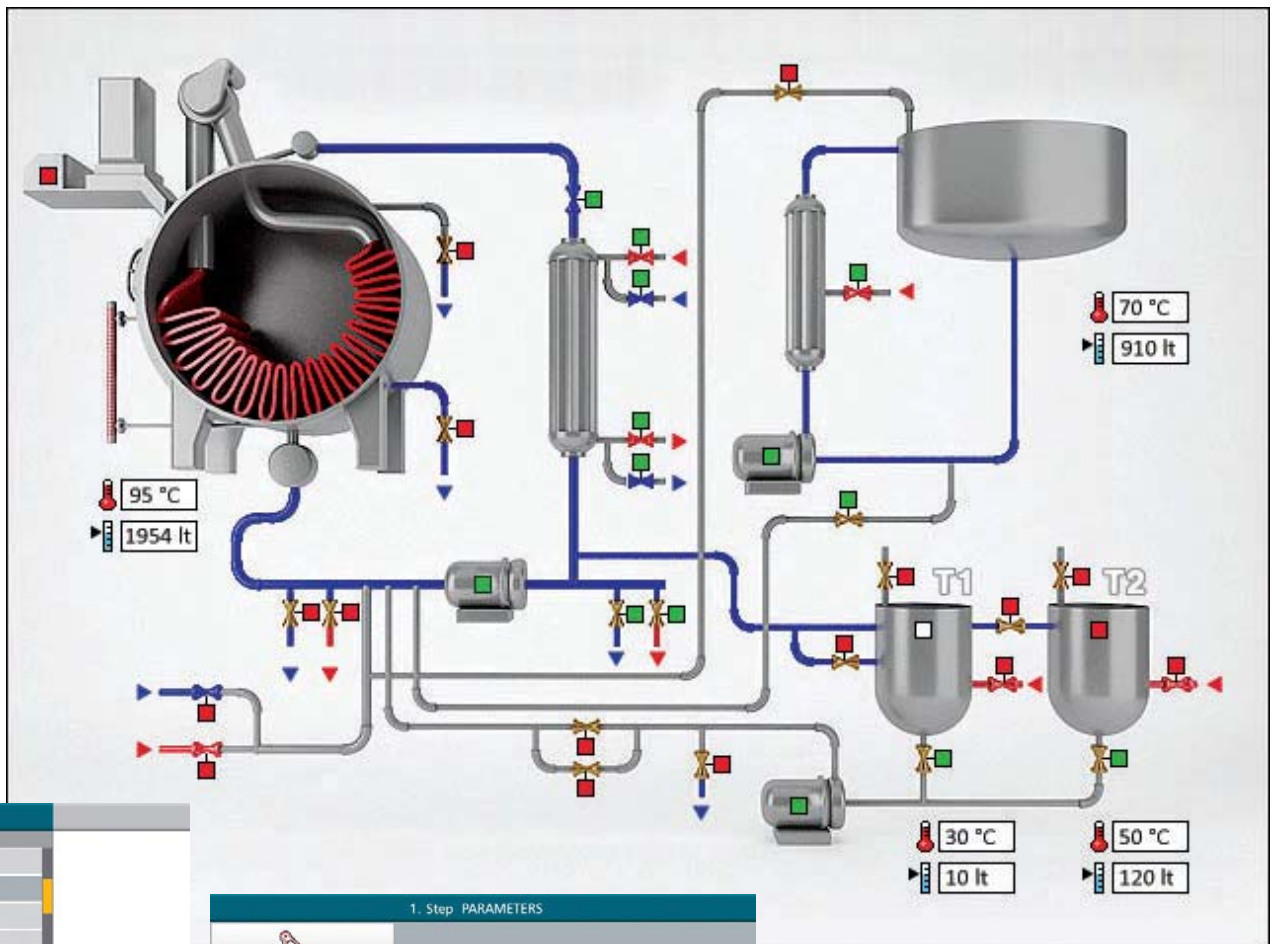
PC software utilities

- Configuration Management Utility
- Configuration Backup Utility
- Excel Report Utility
- Machine diagram configuration software
- Version upgrade tool



22.07.11 - 02:44

0.0 30.0
0.0 10.0



Command List

No	Command Name
01	MT Fill Liters
02	MT Fill Ratio
03	MT Get Dye Water
04	RT MT Transfer
05	RT Get Dye Water
06	RT Fill Liters
07	RT Fill Ratio
08	CT Fill Liters
09	DT Fill Ratio
10	CT Fill Ratio
11	DT Fill Ratio
12	CT RT Transfer

002 / 070

F4- Exit F5- OK F7 F8

1. Step PARAMETERS

002 - MT Fill Ratio

Ratio / 40

Select Source

Cold Water
 Hot Water
 RT MT Transfer
 Osmosis Water

Cold Water

F5- OK

Program No: 000004514 Name: BLEACH

A. No	K. No	Komut İsmi	PARAMETERS
001	030	MT Drain	Ratio: 40 %
002	002	MT Fill Ratio	MT Level Cold Water Osmosis Water

Line: 002 / 002 Step: 002 / 002

F1- List F2- Parallel F3- Operation F4- Exit F5- Save F6- ... F7- ... F8- ...

22.07.11 - 02:44

MT Temperature

34.2 °C

00000452413 002/034 00:17/02:15 16:03 18:18

CH

Ratio

Temperature Control

Time 00:37 / 00:00

Temperature 0 / 50

Target 1

Waiting Time 00:00 / 02:00

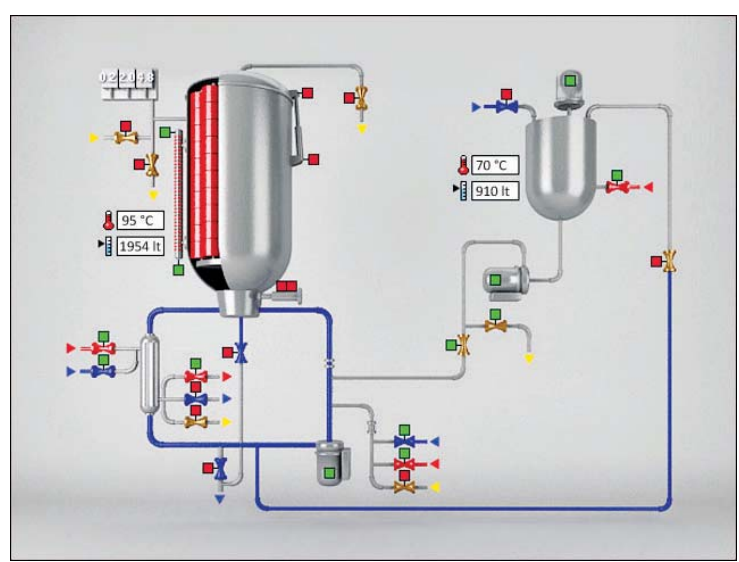
Pump 0 / 7

Reel Speed 50 / 50

Level 0 / 50

Time 00:42 / 03:00

Pump-Reel Kip



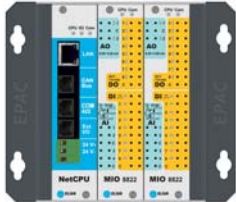
Input/Output Configurations

I/O Unit	Digital Input	Digital Output	Analog Input	Analog Output	Counter
EPAC 10	80*	80*	20	20*	4
ELIAR PLC	64	64	16	16	4
with 2. ELIAR PLC	128	128	32	32	8

* Number of this I/O can be increased using DI32, AO8 and DO16 modules.

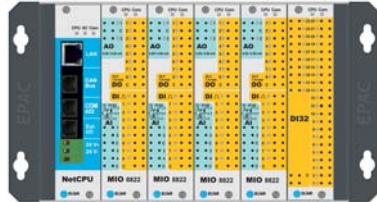
EPAC Series

(Rack type, in IEC-61131 Standard, Programmable Automation Kontrol System)



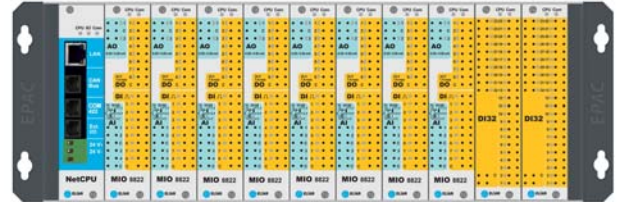
EPAC 2

(NetCPU + 2 x Slot) Rack,
IEC-61131



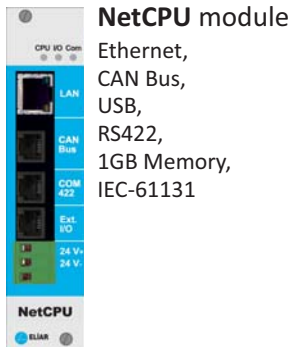
EPAC 5

(NetCPU + 5 x Slot) Rack,
IEC-61131

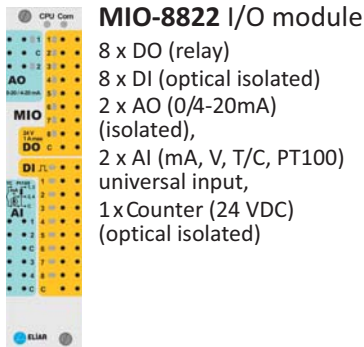


EPAC 10

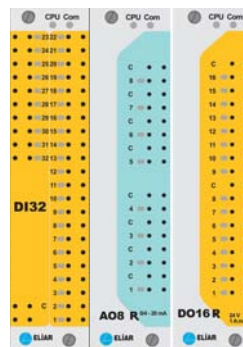
(NetCPU + 10 x Slot) Rack,
IEC-61131



NetCPU module
Ethernet,
CAN Bus,
USB,
RS422,
1GB Memory,
IEC-61131



MIO-8822 I/O module
8 x DO (relay)
8 x DI (optical isolated)
2 x AO (0/4-20mA)
(isolated),
2 x AI (mA, V, T/C, PT100)
universal input,
1 x Counter (24 VDC)
(optical isolated)



DI32 Input module

32 x DI (24 VDC)
(optical isolated)

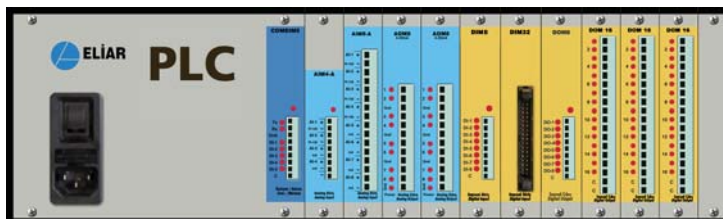
AO8 Output module

8 x AO (0/4 - 20 mA)
(isolated)

DO16 Input module

16 x DO (24 V, 1 A max)
(optical isolated)

ELIAR PLC



COM Counter INPUT	ANALOG		DIGITAL	
	INPUT	OUTPUT	INPUT	OUTPUT

ANALOG INPUTS

ANALOG OUTPUTS

DIGITAL INPUTS

DIGITAL OUTPUTS

AIM4-A: 2 x Pt100 + 2 x 4-20 mA
AIM4-B: 1 x Pt100 + 3 x 4-20 mA
AIM8-A: 4 x Pt100 + 4 x 4-20 mA
AIM8-B: 3 x Pt100 + 5 x 4-20 mA
AOM8: 8 x 4-20 mA
DIM8: 8 x 24 V DC
DIM32: 32 x 24 V DC
DOM8: 8 x 24 V DC
DOM16: 16 x 24 V DC

Technical Specifications

Processor	x86 based, 400Mhz	Analog Calibration	Inputs- Pt100, mA (0-20,4-20) Outputs- mA (0-20, 4-20)
Programs	Unlimited	I/O Unit	ELIAR PLC or EPAC
Locks	200	Program and calibration data downloading	PC
Parallel Processing	16	Communication	USB 2.0, RS232, RS422, CAN Bus, 10/100 Mb Ethernet
Coupled Machines	4	RAM Memory	512 MB (1 GB max)
Display (T 7000)	10.4" TFT, 640x480 dpi, 64 K colors	Flash Disk	1 GB (4 GB max)
Display (T 7000 D)	Touchscreen, 10.4" TFT, 640x480 dpi, 64 K colors	Real-time clock	Yes
Keyboard	40 keys, industrial	Protection Rating	IP 54 (front), IP 21 (rear)
Operating Voltage	24 V DC (18 - 36 V)	EMC compatibility	EN 61000-4-2 EN 61000-4-4 EN 61000-4-6 EN 61000-4-11
Power Consumption	25 W OpTerm, 30 W EPAC/PLC	Dimensions (in mm)	274 x 349 (front), 170 x 242 (rear), 100 (depth)
Operating Temperature	0-50 °C		
Humidity	% 10-85 (non-condensed)		
Isolation	2000 V (digital), 500 V (analog)		



ELEKTRONİK SANAYİ A.Ş. Levazım Mh. Korukent Sitesi A Blok No: 8-9 Beşiktaş 34340 İstanbul - TÜRKİYE
Phone: +90 212 274 30 31 pbx Fax: +90 212 274 20 30 e-mail: info@eliar.com.tr www.eliar.com.tr